

State of Wyoming Corner Record

(In compliance with the CORNER PERPETUATION AND FILING ACT, Wyoming Statutes, 1977, Section 36-11-101, et. seq., and the Rules and Regulations of the Board of Registration for Professional Engineers and Professional Land Surveyors)

Reverse side of this form may be used if more space is needed.

Record of original survey and citation of source of historical information (if corner is lost or obliterated). Description of corner monumentation evidence found and/or monument and accessories established to perpetuate the location of this corner. Sketch of relative location of monument, accessories, and reference points with course and distance to adjacent corner(s) (if determined in this survey). Method and rationale for reestablishment of lost or obliterated corner.

G.L.O. Notes: U.S. Deputy Surveyor, Edwin James, June 20, 1871; 40.00 Chains... Set a sand stone 18 x 12 x 4 for quarter section corner.

Found: A well set marked reddish colored 3" x 8" sandstone 4" out of the ground 1' West of a North/South fence line. Stone was marked with a 1/4 on the west face.

Set: Nothing.

See back of this sheet for ties to adjacent monuments.

200706
LARAMIE COUNTY CLERK
CHEYENNE, WY.
97 APR 7 PM 4 40

Date of Field Work: 1, March, 1994 Office Reference: EXXON Looseleaf Pg. 50

CROSS INDEX DIAGRAM

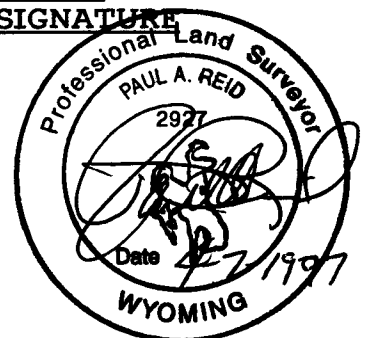
A	1	2	3	4	5	6	7	8	9	10	11	12	13	14	15	16	17	18	19	20	21	22	23	24	25	A
B																										B
C		6																								C
D			5																							D
E				4																						E
F					3																					F
G						2																				G
H							1																			H
I																										I
J																										J
K																										K
L																										L
M																										M
N																										N
O																										O
P																										P
Q																										Q
R																										R
S																										S
T																										T
U																										U
V																										V
W																										W
X																										X
Y																										Y
Z																										Z

Firm/Agency, Address

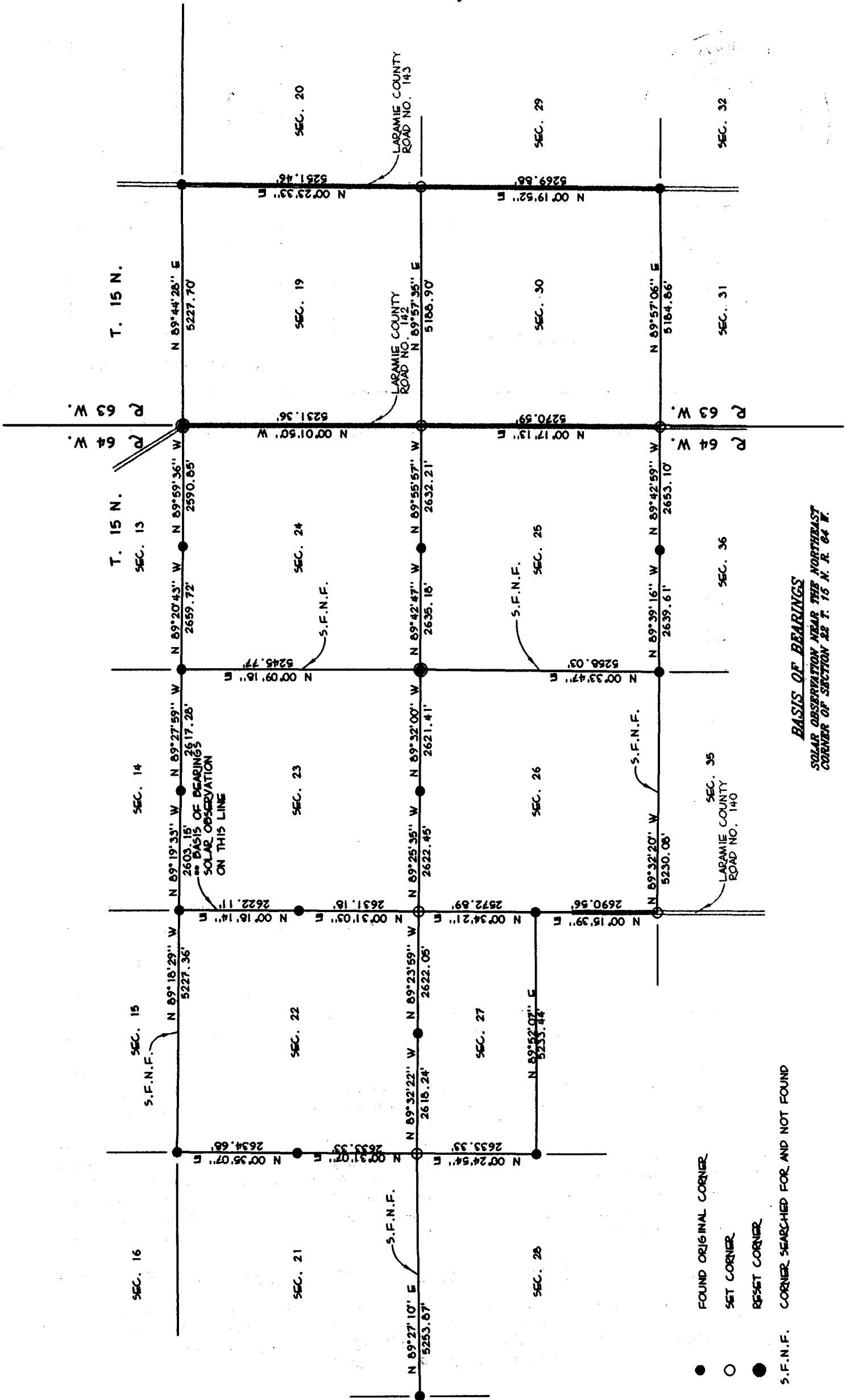
Paul A. Reid, A.V.I.P.C.
2035 Westland Road
Cheyenne, WY 82001

Telephone Number:
(307)-634-6017

This corner record was prepared by me or under my direction and supervision.
SEAL & SIGNATURE



Corner Name: W 1/4 Cor. Section: 26 T 15N R 64W; 6TH P.M. Cross-Index No.: T-17



BASIS OF BEARINGS
SOLAR OBSERVATION NEAR THE NORTHEAST
CORNER OF SECTION 22 T. 15 N. R. 64 W.

- FOUND ORIGINAL CORNER
- SET CORNER
- RESET CORNER
- S.F.N.F. CORNER SEARCHED FOR AND NOT FOUND